



# DYNOTILE INSTALLATION GUIDE

**2015**

Clear floor area, and sweep to remove any dust, dirt or rubbish.



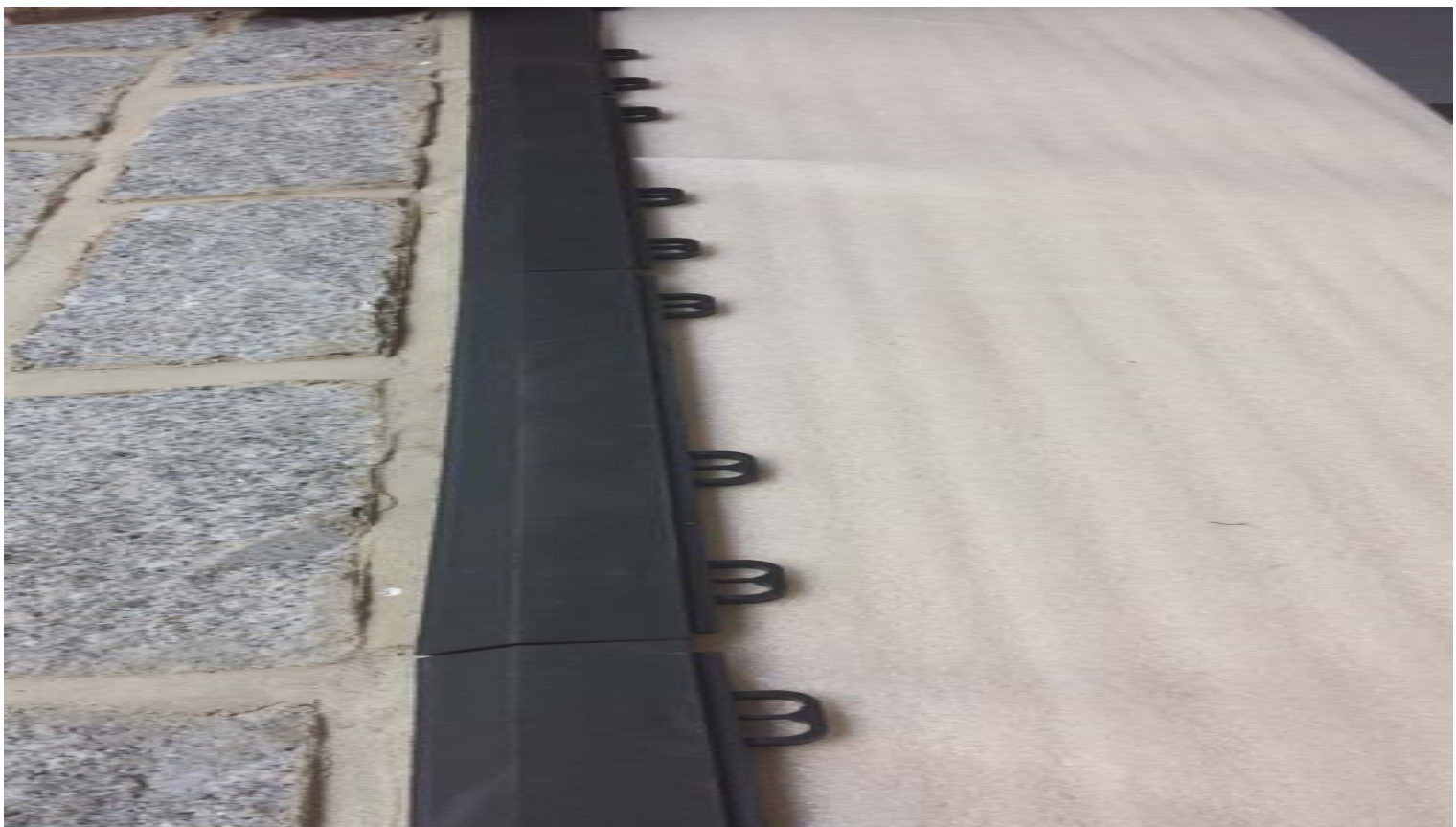
Measure floor area to determine correct number of tiles required.



Lay down underlay loosely across the entire floor area, cutting to size at walls, and around abutments.



Mark position where garage door meets the floor, and lay out female edge pieces up to this point.





Starting at the front right corner, lay the first row of tiles, connecting with the female edge pieces as you go, and repeat this process, making your way backwards.



At walls, cut tiles to size, ensuring that an adequate expansion gap is left (around 8-10mm)



An optional skirting is available to conceal the expansion gap if required.





The best technique for tapping tiles together  
Is to hold tile at slight angle, and tap down  
and towards the tile adjacent



The finished job.

